

Inequality of Educational Outcome and Inequality of Educational Opportunity in the Netherlands during the 20th Century

Maarten L. Buis

Faculty of Social Sciences
VU University Amsterdam

- Changes in the strength of the association between family background and education

Subject of the dissertation

- Changes in the strength of the association between family background and education
- A measure of the 'unfairness' of the educational system

Subject of the dissertation

- Changes in the strength of the association between family background and education
- A measure of the 'unfairness' of the educational system
- Two types:

Subject of the dissertation

- Changes in the strength of the association between family background and education
- A measure of the 'unfairness' of the educational system
- Two types:
 - **IEOut**, Inequality of Educational Outcome: Association between family background and the **highest achieved level of education**

Subject of the dissertation

- Changes in the strength of the association between family background and education
- A measure of the 'unfairness' of the educational system
- Two types:
 - **IEOut**, Inequality of Educational Outcome: Association between family background and the **highest achieved level of education**
 - **IEOpp**, Inequality of Educational Opportunity: Association between family background and the **probability of from one level of education to the next**

Chapter 2 To what extent are known patterns in IEOpp and IEOut replicated in the newest data?

Questions

Chapter 2 To what extent are known patterns in IEOpp and IEOut replicated in the newest data?

Chapter 3 How much is each educational category worth?

Questions

- Chapter 2 To what extent are known patterns in IEOpp and IEOut replicated in the newest data?
- Chapter 3 How much is each educational category worth?
- Chapter 4 How has IEOut changed over time?

- Chapter 2 To what extent are known patterns in IEOpp and IEOut replicated in the newest data?
- Chapter 3 How much is each educational category worth?
- Chapter 4 How has IEOut changed over time?
- Chapter 5 Has the relative influence of fathers and mothers, and their occupation and education changed over time?

Questions

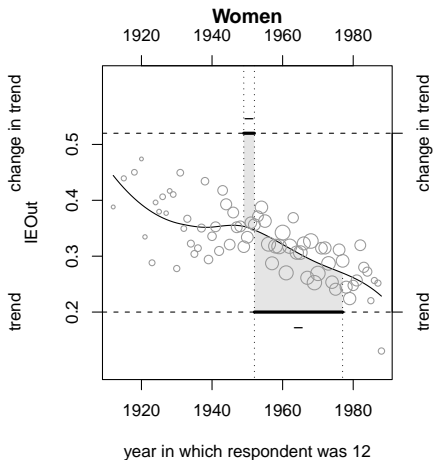
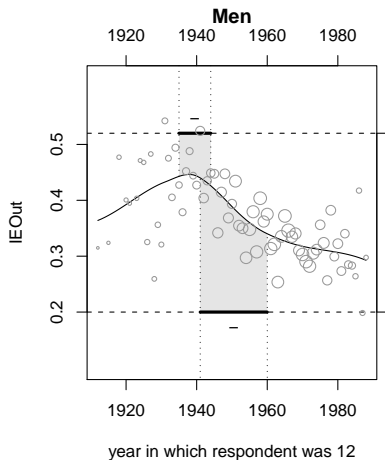
- Chapter 2 To what extent are known patterns in IEOpp and IEOut replicated in the newest data?
- Chapter 3 How much is each educational category worth?
- Chapter 4 How has IEOut changed over time?
- Chapter 5 Has the relative influence of fathers and mothers, and their occupation and education changed over time?
- Chapter 6 How are IEOut and IEOpp related?

Questions

- Chapter 2 To what extent are known patterns in IEOpp and IEOut replicated in the newest data?
- Chapter 3 How much is each educational category worth?
- Chapter 4 How has IEOut changed over time?
- Chapter 5 Has the relative influence of fathers and mothers, and their occupation and education changed over time?
- Chapter 6 How are IEOut and IEOpp related?
- Chapter 7 To what extent are estimates of IEOpp sensitive to potential disturbing influences of unobserved variables?

- Chapter 2 To what extent are known patterns in IEOpp and IEOut replicated in the newest data?
- Chapter 3 How much is each educational category worth?
- Chapter 4 How has IEOut changed over time?
- Chapter 5 Has the relative influence of fathers and mothers, and their occupation and education changed over time?
- Chapter 6 How are IEOut and IEOpp related?
- Chapter 7 To what extent are estimates of IEOpp sensitive to potential disturbing influences of unobserved variables?

Trend in Inequality of Educational Outcome



Relationship between IEOpp and IEOut

Standard statistical model for IEOpp implies a relationship between the two that has a nice substantive interpretation.

Relationship between IEOpp and IEOut

Standard statistical model for IEOpp implies a relationship between the two that has a nice substantive interpretation.

$$\text{IEOut} = \text{weight}_1 \times \text{IEOpp}_1 + \text{weight}_2 \times \text{IEOpp}_2 + \cdots + \text{weight}_k \times \text{IEOpp}_k$$

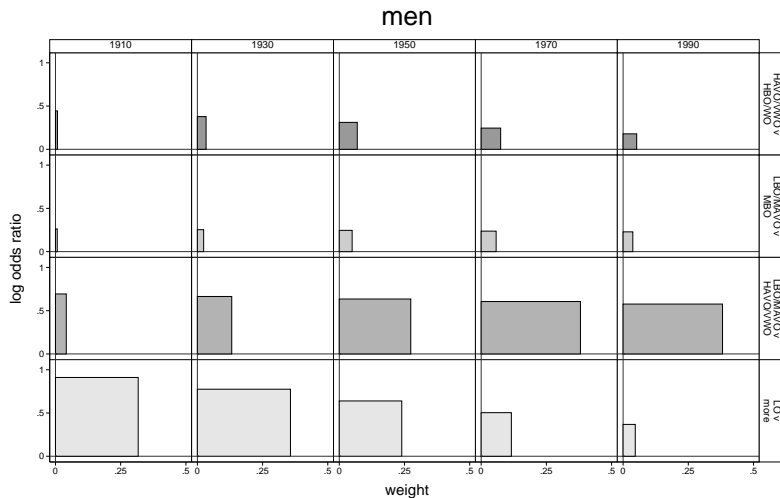
Relationship between IEOpp and IEOut

Standard statistical model for IEOpp implies a relationship between the two that has a nice substantive interpretation.

$$\text{IEOut} = \text{weight}_1 \times \text{IEOpp}_1 + \text{weight}_2 \times \text{IEOpp}_2 + \cdots + \text{weight}_k \times \text{IEOpp}_k$$

$$\text{weight} = \text{at risk} \times \text{variance} \times \text{gain}$$

Decomposition of IEOut in IEOpps and weights



Decomposition of IEOut in IEOpps and weights

